

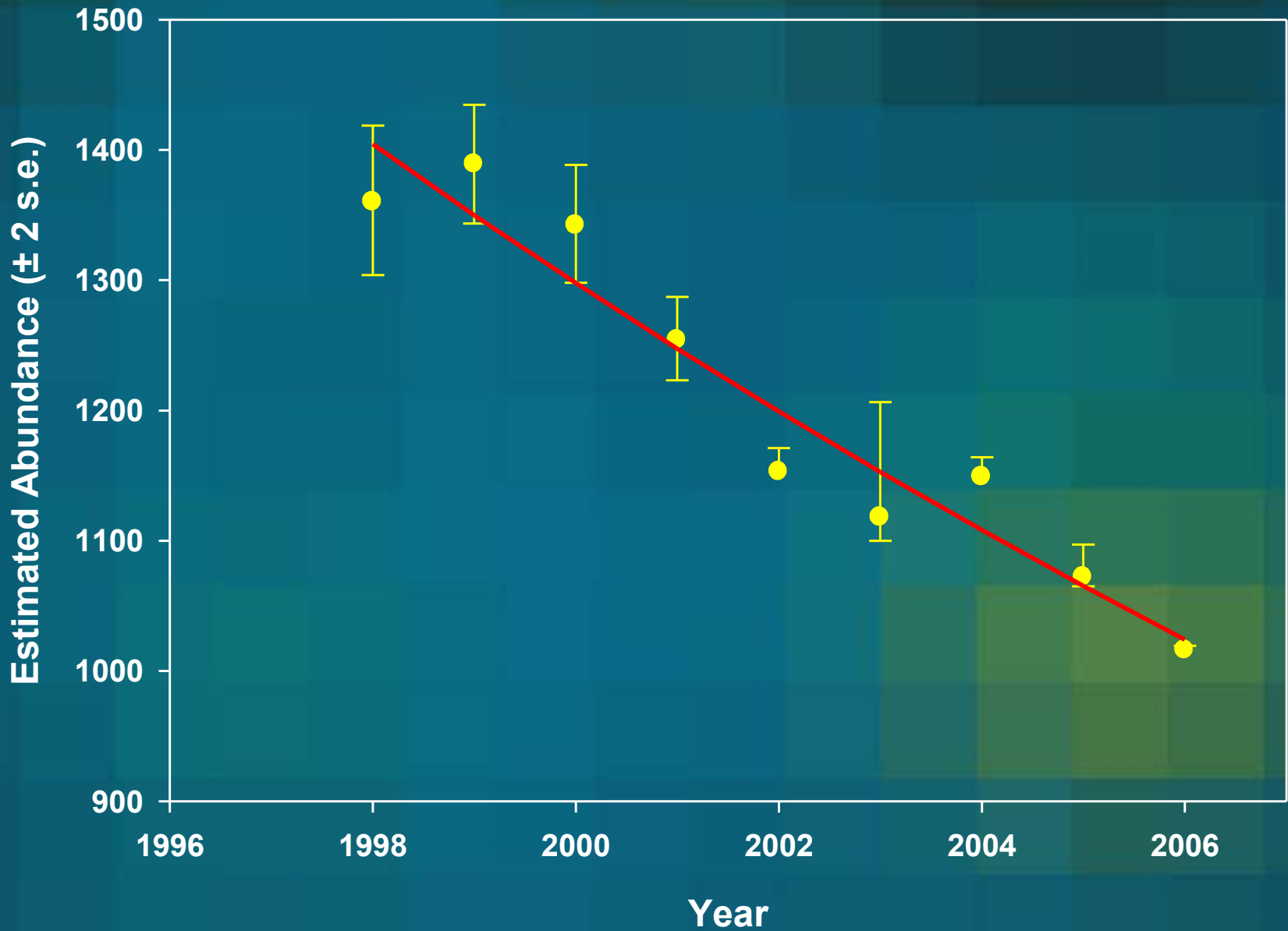
*Hawaiian Monk Seal  
Recovery Plan,  
MHO Management Issues,  
and Critical Habitat*



National Marine Fisheries Service  
Pacific Islands Regional Office  
Protected Resources Division

**David Schofield HMS Recovery and MMRN Coordinator**

# The Hawaiian monk seal is in crisis:



# Threats Impacting Hawaiian Monk Seals

- Food limitation = very low survival of juveniles & sub-adults due to starvation
- Entanglement in marine debris = significant mortality
- Predation of juvenile seals by Galapagos sharks



# *Threats Impacting Hawaiian Monk Seals*

- Human interactions in the main Hawaiian Islands (MHI):
  - recreational fishery interactions
  - mother-pup disturbance on popular beaches
  - exposure to disease
- Haul-out & pupping beaches lost to erosion in NWHI
- Prey resources in NWHI reduced from climate cycles, etc.
- Potential disease outbreaks = devastating to small population size & limited geographic range





*Download the Recovery Plan at:*

---

[www.fpir.noaa.gov/PRD/prd\\_hawaiian\\_monk\\_seal](http://www.fpir.noaa.gov/PRD/prd_hawaiian_monk_seal)



# Recovery Strategy

---

1. Improve juvenile female survivorship in NWHI
2. Maintain extensive field presence in the NWHI
3. Ensure the continued growth in the MHI
4. Reduce the probability of the introduction of infectious diseases



# Pacific Islands Region

## Marine Mammal Response Network

---

### Protected Resources Division

Jurisdiction over the protection & recovery of federally protected marine species as mandated by:

- Endangered Species Act
- Marine Mammal Protection Act

### To carry out these “responses”:

- Hawaiian monk seals: Haul-out response, pupping events, hookings, etc.
- Stranding response
- Vessel collision
- Disentanglement
- Unusual mortality event (UME)
- Oil spill

*...through community involvement while sensitive to Hawaiian cultural issues*





















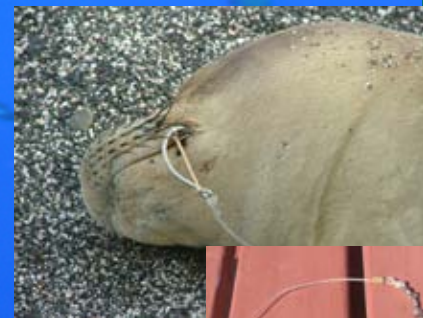
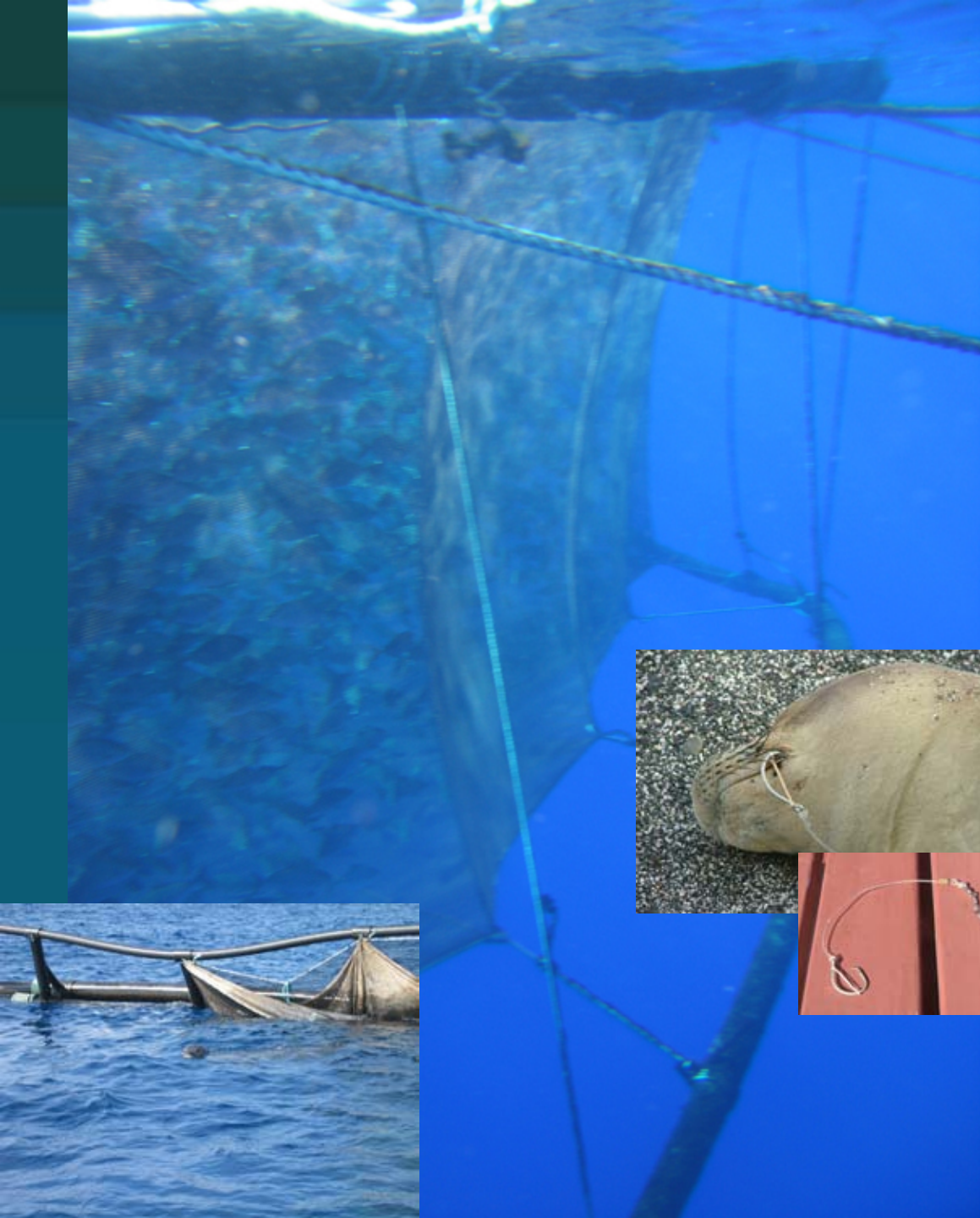






Photo by D.B. Dunlap









R.  
Baird





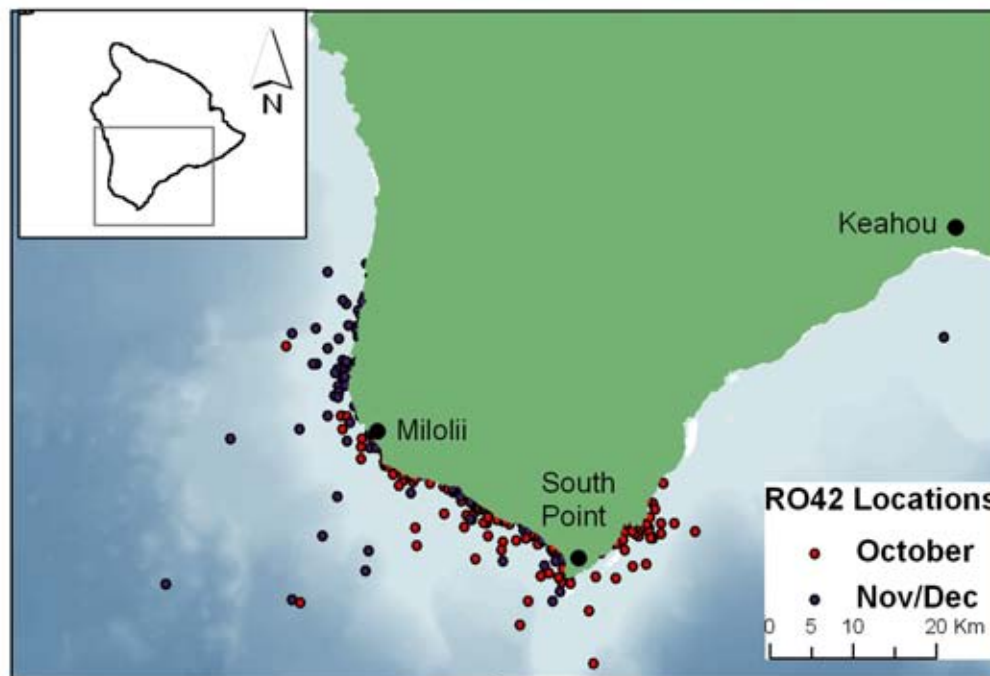
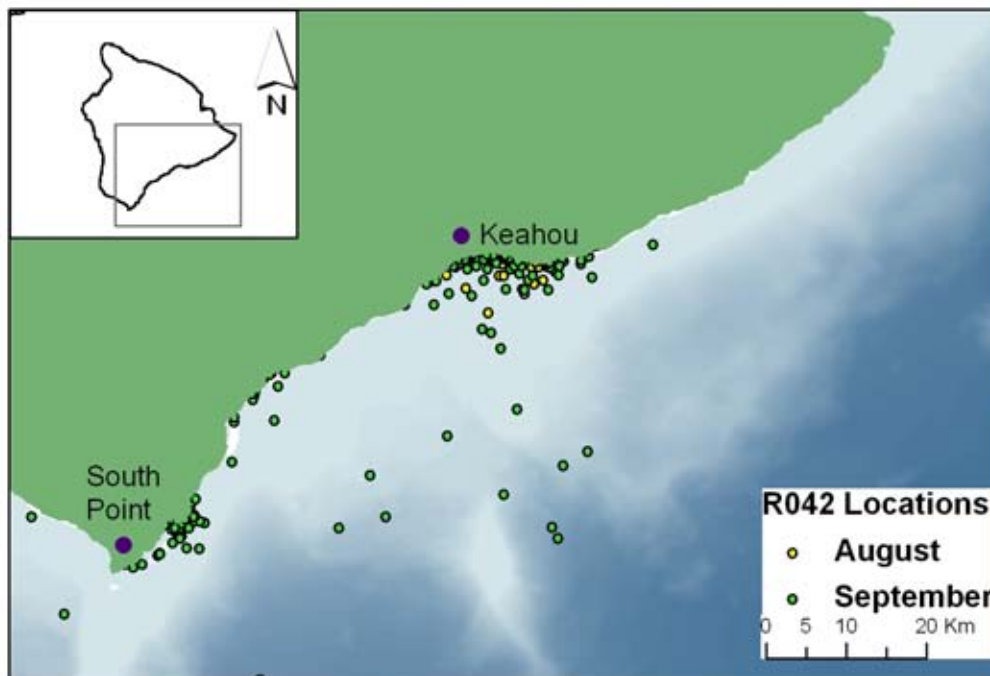






# P042

## Post Relocation Tracking





# Enforcement



- Increased number of OLE officers in region
- Recent dog case recently closed
- Several cases pending
- Volunteer report forms

# Hawaiian Monk Seal Response Network

Takes Under Permit

# 932-1489-09

**David Schofield - MMRNC**

- Kauai – Mimi Olry **DLNR DAR/NOAA PIRO** + Wendy McIlroy **NOAA PIRO contractor** Kauai Conservation Hui
- Oahu – David Schofield **PIRO**, Tracy Wurth – **PIFSC**, Hawaiian Monk Seal Response Team Oahu
- Molokai – Eric Brown Kalaupapa, **NPS**, Julie Lopez and Molokai Team
- Maui/Lanai – Nicole Davis **NOAA PIRO/HPU** and Maui team
- Kaho’olawe – **KIRC**
- Big Island – Justin Viezbicke **DLNR/DAR**, Jason Turner/Melissa Netze **UH Hilo/NOAA PIRO**



# Semi-annual MHI Seal Count



Island	April 28, 2007	October 20, 2007	April 19, 2008
Kaua'i	13	6	15
O'ahu	6	5	15
Moloka'i	19	7	8
Maui/Lana'i	1	3	0
Kaho'olawe	2	1	2
Big Island	0	1	1
<b>Total</b>	<b>41</b>	<b>23</b>	<b>41</b>



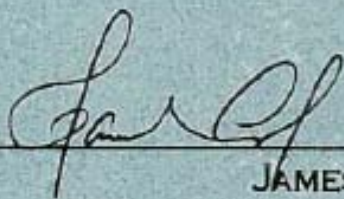
THIS CERTIFIES THAT ON  
JULY 1, 2008  
THE HAWAIIAN MONK SEAL  
(*MONACHUS SCHAUINSLANDI*)

IS ESTABLISHED AND DESIGNATED AS THE OFFICIAL

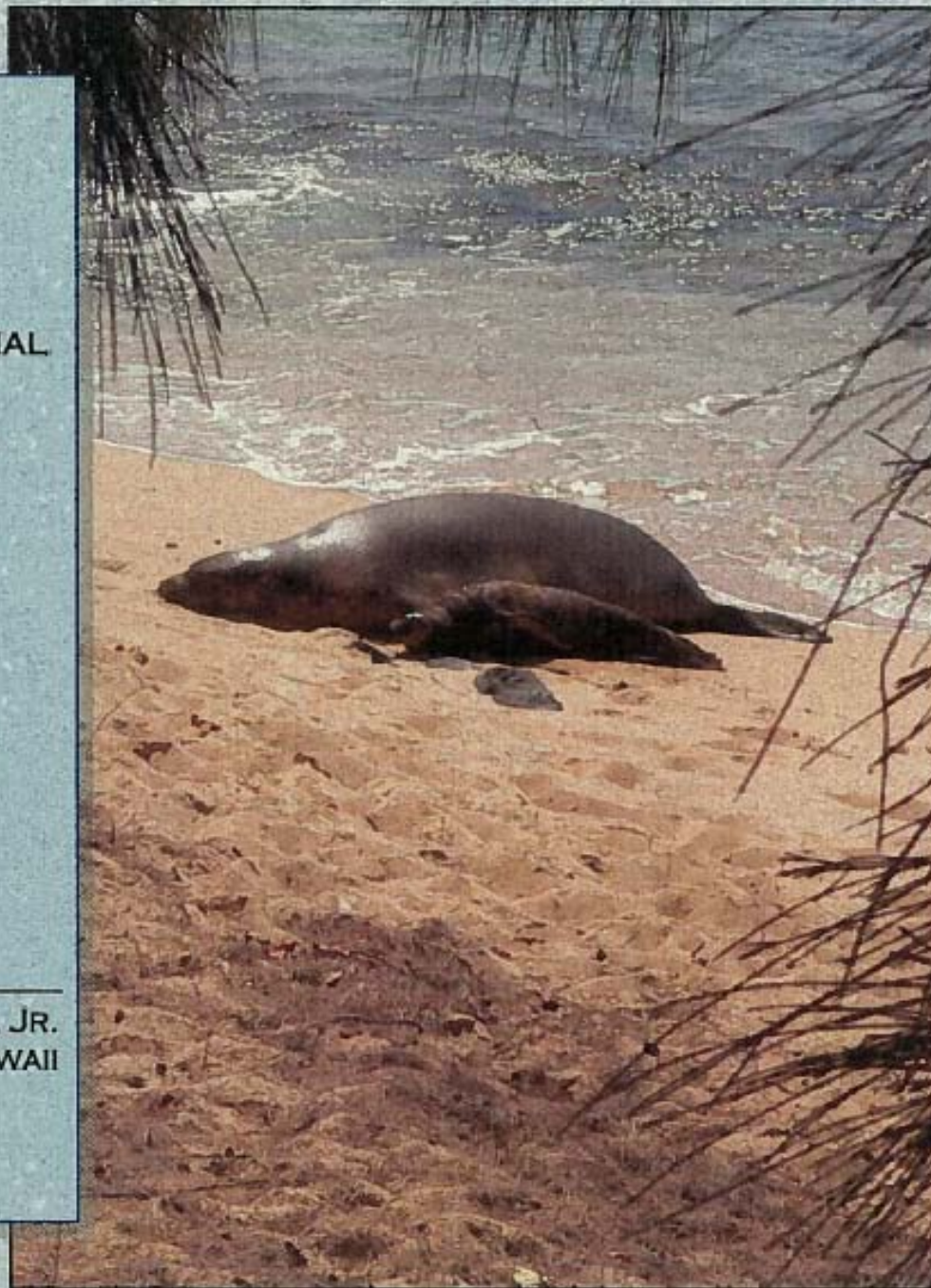
MAMMAL OF THE STATE OF HAWAII

THIS DESIGNATION RECOGNIZES  
THE IMPORTANCE AND UNIQUENESS OF THE  
HAWAIIAN MONK SEAL  
TO THE HAWAIIAN ISLANDS

APPROVED ON THIS DAY OF JUNE 12, 2008



JAMES R. "DUKE" AIONA, JR.  
LT. GOVERNOR OF THE STATE OF HAWAII





# For the Future:

Continue to work with the State to:

- Build response capacity
- Build outreach programs
- Build community ownership
- Sustain programs through \$\$\$ Subset of HMS Recovery Plan
- MHI Mgmt plan
  - Monk seal Issues and mitigation
  - Human impacts
  - Response Networks
  - Outreach programs

# Critical Habitat Designation

## What is Critical Habitat?

- When a species is listed, ESA requires designation of its 'critical habitat'.
- Areas with essential features for survival & recovery of the species.
- ESA prohibits the ~~'destruction or adverse modification'~~ of critical habitat.
- Alteration that diminishes value of critical habitat for survival & recovery.

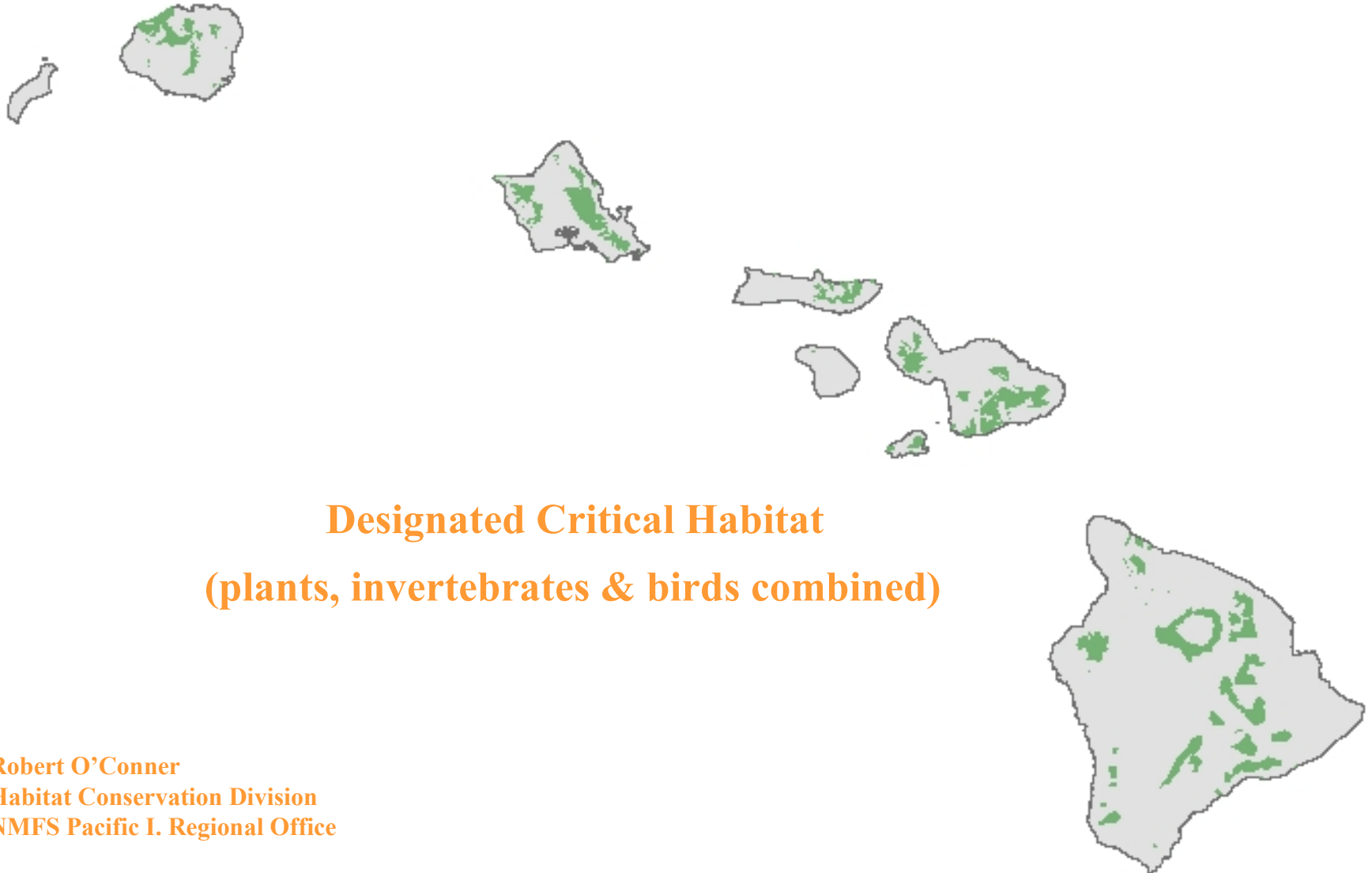


# Main Points:

1. Critical habitat does not set up a refuge or preserve.
1. Critical habitat does not affect non-Federal actions.
1. Effects of Federal actions on critical habitat are analyzed in §7 consultation.



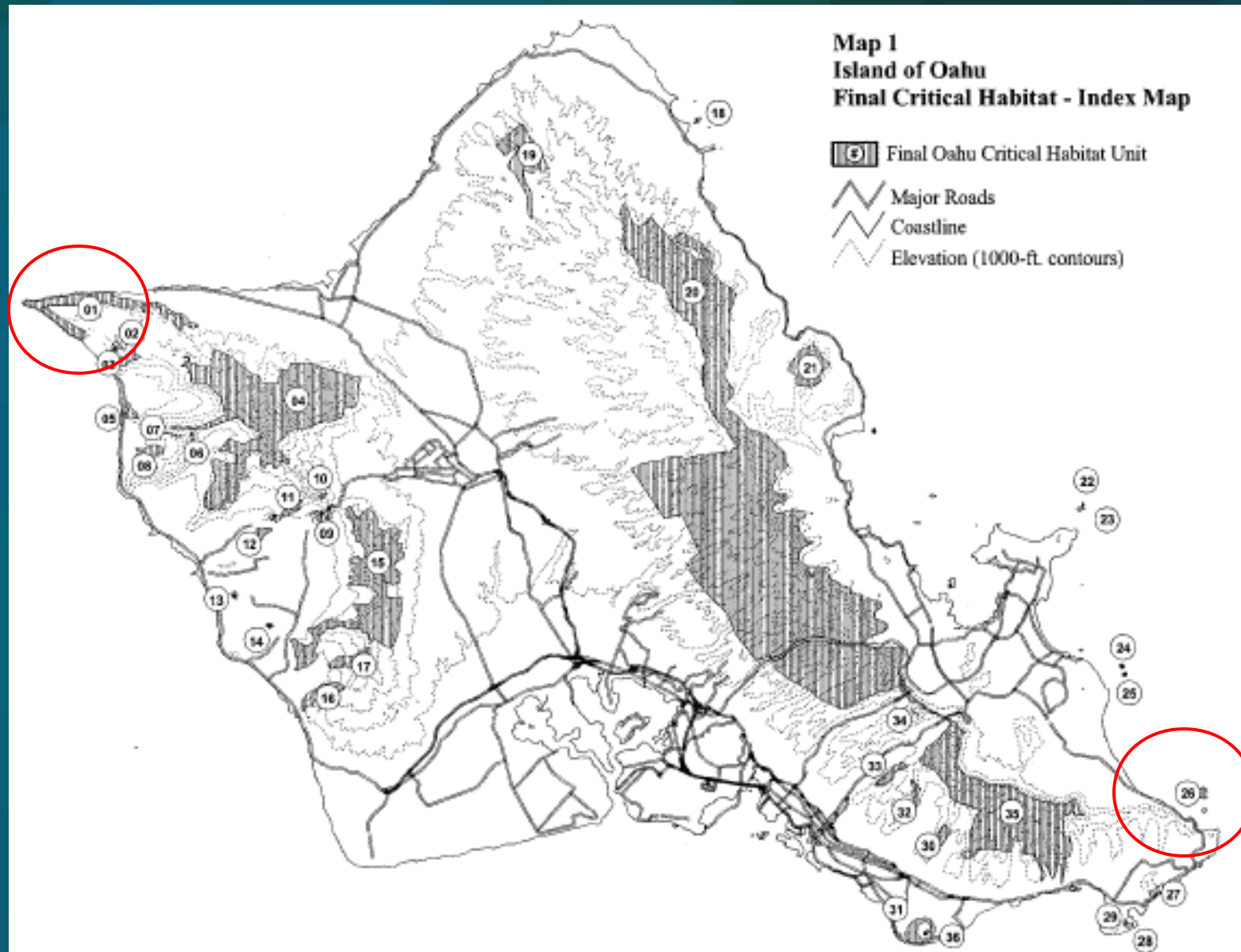
# Critical Habitat $\neq$ Refuge, Preserve, MPA, Park



**Designated Critical Habitat**  
**(plants, invertebrates & birds combined)**


Robert O'Conner  
Habitat Conservation Division  
NMFS Pacific I. Regional Office

# Critical Habitat $\neq$ Refuge, Preserve, MPA, Park





# Critical Habitat Does Not Affect Non-Federal Actions

- Critical habitat provisions only apply to **‘Federal actions’**.
- An action carried out, funded, permitted or authorized by a Federal agency.
- Critical habitat provisions do not apply to activities on private land, unless the activity is a Federal action.
- Critical habitat provisions do not apply to activities on non-Federal public land or water (beaches, State waters), unless the activity is a Federal action.

# **Activities NOT Affected by Critical Habitat:**

## **All non-Federal activities on private land, such as:**

**Construction**

**Farming**

**Logging**

**ATV use**

**Hunting**

**Any other non-Federal activity**

## **All non-Federal activities on non-Federal public land or water, such as:**

**Beach recreation**

**Walking the dog**

**Hunting**

**Ocean recreation in State waters**

**Shoreline and lay gillnet fishing in State waters**

**Boating & jet-skis in State waters**

**Operation of tour vessels in State waters**

**Any other non-Federal activity**



# Critical Habitat and Federal Actions

## Examples of Federal actions that may affect critical habitat:

Beach replenishment

Coastal development

Shoreline protection

Channel/harbor dredging

Military activities on or near shorelines

Federal fisheries management?

# Take Home Points:

1. Critical habitat does not set up a refuge or preserve.
1. Critical habitat does not affect non-Federal actions.
1. Effects of Federal actions on critical habitat are analyzed in §7 consultation.



# Next Steps

1. **Send letter acknowledging receipt of petition.**
1. **Determine if petition provides substantial info (90-day finding).**
1. **If so, determine if action is warranted (1-year status review).**
1. **If so, propose revision of critical habitat (proposed rule).**

## **Critical Habitat Team:**

**Lisa – Oversight**

**Lance – Project leader, ESA interpretation**

**David – Development of essential features, Science Center liaison**

**Krista – FR notices, Monument liaison**

**Jen – Outreach & education**