

## 21<sup>st</sup> Annual Hawai'i Conservation Conference (HCC) Media Report, 2013

The following media articles were produced prior, during, and shortly after the 2013 HCC.

### Television:

#### ‘Ōlelo TV:

- Next Gen Session: Tuesday 7/16, Session Three: 3:30-5:30, #316BC
- Community Connection Event including HGGI World Cafe: Wednesday 7/17, 1:00-8:30, #316BC
- Community Connection Event: Wednesday 7/17 5:30 – 7:00pm (include art walk, chef's, movie)
- Micronesia Challenge Session: Thursday 7/18, Session Eight 10:30-12:30, #316BC
- CBFSA/KUA Session (Same room as Micronesia Challenge): Thursday 7/18 2:30-4:30, #316BC

### Radio:

All Things Marine radio show on Hawaii's Tomorrow 760 AM.

- The podcast available at <http://www.cosee-ie.net/programs/allthingsmarineradioshow/>.
- It is also available for download at <https://www.hawaii.edu/filedrop/dl/MvUvT-JeqfY-DOzJM-iThKI/>.

### Online:

Damon Tucker, Hawai'i News and Information

- April 18<sup>th</sup>, 2013: **“Student Rates Announced for the 2013 Hawaii Conservation Conference”**
- December 20<sup>th</sup>, 2012: **“Call for Proposals & Abstracts for the 21<sup>st</sup> Annual Hawaii Conservation Conference”**
- November 5<sup>th</sup>, 2012: **“Members Needed for the 2013 Hawai'i Conservation Conference Abstract Committee**
- October 19<sup>th</sup>, 2012: **“2013 Hawai'i Conservation Conference – Call for Proposals and Abstracts”**

Hawaii Independent

- July 3<sup>rd</sup>, 2013: **“Come to Connect On Land, Food, Sustainability”**

Hawai'i Visitors and Convention Bureau

- June 22<sup>nd</sup>, 2013: **“21<sup>st</sup> Annual Hawai'i Conservation Conference, July 16-18, 2013”**

KUPU

- July 30<sup>th</sup>, 2013: **“Hawai‘i Conservation Conference”**

Print:

Islandtimes

- August 2<sup>nd</sup>, 2013: **“PAN FUND attended 21<sup>st</sup> Annual Conservation Conference”**



# DAMON TUCKER: HAWAII NEWS & INFORMATION

[Entries RSS](#) | [Comments RSS](#) 

## Breaking News

**Tweets**[Follow](#)

**Breaking News Money** 1h  
@breakingmoney

US stocks close mostly lower as S&P 500 retreats from record but stays above 2,000 - @USATODAYmoney  
[usat.ly/1pmkvjf](http://usat.ly/1pmkvjf)

Retweeted by Breaking News

Tweet to @BreakingNews

## Student Rates Announced for the 2013 Hawaii Conservation Conference

Posted on April 18, 2013 by Damon

The Hawai'i Conservation Alliance in partnership with Hau'oli Mau Loa Foundation proudly announces the [2013 Hawai'i Conservation Conference](#) Student Rate Program.



Under this program, Hawai'i high school students, college students, and emerging professionals may be qualified to attend this year's Hawai'i Conservation Conference at a special rate of \$50.



Muralist Wyland and others at the 2012 Conservation Conference

Our neighboring island recipients will also receive at \$200 travel stipend.

## SHOP

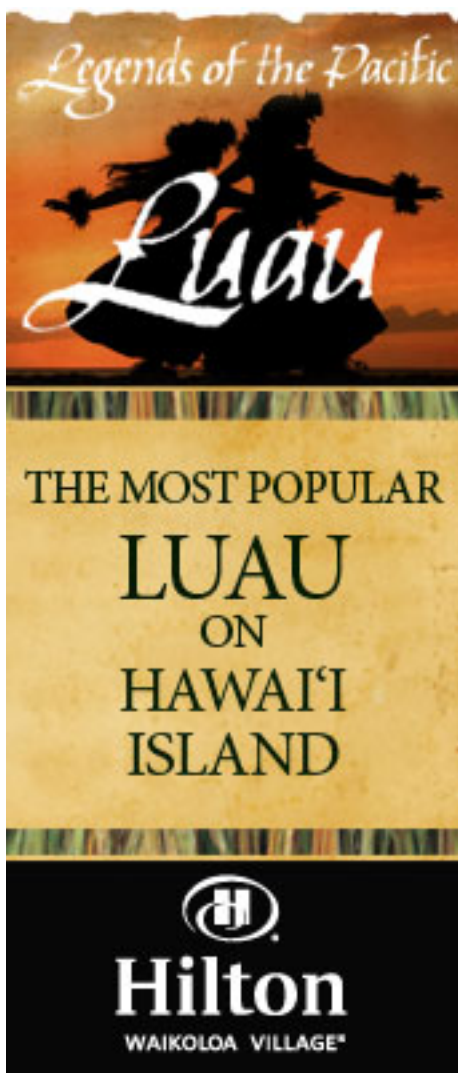


[HuffPost Hawaii](#)

[Your Friends Affect Your Health A Lot More Than You Think](#) September 2, 2014

[9 Breathtaking 360-Degree](#)

**Hilton**  
Waikoloa Village  
On Hawaii's Big Island  
Special Kama'aina Rates from just **\$159** per room, per night!  
[book now](#)



Please visit the following link for more details, eligibility requirements and applications (printable & fillable pdfs). Applications are due by May 30th, 2013.

[http://hawaiiconservation.org/activities/hawaii\\_conservation\\_conference/conferences/2013/](http://hawaiiconservation.org/activities/hawaii_conservation_conference/conferences/2013/)

Like:



Filed under: [aloha](#), [Announcements](#), [Education](#), [Environment](#), [Hawaii](#), [Hawaiian](#), [Health](#), [State Affairs](#), [Sustainable Living](#), [Technology](#) | Tagged: [2013 Hawaii Conservation Conference](#), [Biodiversity](#), [Hawaiian Islands](#) | [Leave a comment »](#)

## [Call for Proposals & Abstracts for the 21st Annual Hawaii Conservation Conference](#)

Posted on **December 20, 2012** by Damon

Call for Proposals & Abstracts for the 21st Annual Hawaii Conservation Conference, *Living Today, Sustaining Tomorrow: Connecting People, Places and Planet*, July 16th – 18th, 2013 at the Hawai'i Convention Center.



[Views Of Hawaii, Thanks To Google's Trekker](#) September 2, 2014

### [Big Island Video News](#)

[Hawaii Lava Flow Update for Monday, September 1](#)  
September 1, 2014

[VIDEO: Officials Grilled on Geothermal Steam Release](#)  
August 31, 2014

[Lava Spills Out Of Steaming Crack – Saturday Aug. 30 Update](#) August 30, 2014

### [KITV](#)

[Body of scuba diver found off of Kauai](#)

[17-year-old boy found dead at Kapena Falls](#)

[Last week for auditions for Hawaii Sacred Choir](#)

### [KHON](#)

[Prominent local realtor due in court for money laundering case](#)

[2 men facing felony abuse charges](#)


[Punahou, Lahainaluna top this weeks #Cover2 Power Polls](#)

### [Hawaii Reporter](#)

[On Target Review: Krebs Custom VEPR UFM Keymod Handguard](#)



**HILO  
COFFEE  
MILL**  
Mountain View  
Between MM 12 & 13



**Farmers  
Market**  
Saturdays

**Discount  
Hawaii  
Car  
Rental  
Save  
up to  
70%  
1-800-292-1930**

**PARTY IN PARADISE**



**SKYDIVE HAWAII**



**Session and Abstract Proposal Deadline:** *January 21, 2013*    **Revisions Deadline:** *March 15, 2013*

2013 marks the 21st annual Hawai'i Conservation Conference (HCC) allowing us the opportunity to bolster island conservation in Hawai'i and wider Pacific Islands. Highlights include: thought provoking keynote speakers; innovative panels and forums; a community event, novel lunch & reception, training opportunities, and more. Join us in celebrating the 21st annual Hawai'i Conservation Conference!

#### **TRACKS & SESSION TOPICS**

The HCC organizing committee is soliciting proposals for symposia, forums, workshops, trainings and individual oral or poster presentations in the following six tracks. Integrated approaches to research and management that involve community and cultural knowledge and approaches as a best practice will be given priority ranking.

**kolohe**  
*Auto Repair*

Specializing in Diagnostics  
Ed Miner  
lead mechanic  
13-1311 Malama St.  
Pahoa, HI 96778  
(808) 965-9910 ph.  
(808) 965-9930  
edminerjr@gmail.com

**Ho'omana**



693-5317  
**Tree Service**

#### **The Star- Advertiser**

[Police tie dead car thief to Red Hill officer-involved shooting](#)

[Report accuses Islamic State group of war crimes](#)

[Teen charged with murder in beating death at Maui park](#)

[Jimi Jamison, lead singer of Survivor, dead at 63](#)

#### **UH News**

[Mānoa: Law School excels in its outreach to international students and attorneys](#)  
August 29, 2014

[Mānoa: UH disaster preparedness expert Karl Kim named chair of national consortium](#) August 29, 2014

[Mānoa: Civil Engineering students earn accolades in intercollegiate competition](#)  
August 27, 2014

[State of Emergency Declared in Hawai'i County](#) August 7, 2014

[Hawai'i County to Close for Half Day Thursday and All Day Friday in Response to Hurricanes Iselle and Julio](#) August 7, 2014

[\\$22.3 Million Pāhoa District Park Construction Begins](#) August 1, 2014

[Orbitz reaches agreement with American, US Airways; fares back on all websites](#) September 2, 2014

[Auction to provide up to \\$2.1M for Hawaii energy efficiency projects](#) September 1, 2014

[Hawaii drawing interest from numerous markets and airlines](#) September 1, 2014

### Say When


September 2014

**M T W T F S S**

[1](#) [2](#) 3 4 5 6 7  
8 9 10 11 12 13 14  
15 16 17 18 19 20 21  
22 23 24 25 26 27 28  
29 30

[« Aug](#)

### When

Select Month 



#### 1. Practicing Laulima (many hands): Building of Bridges between Ecosystems and Society

Human well-being is inextricably linked to the natural world through a myriad of exchanges – most of which go unnoticed or are under-appreciated in modern times.

Radical changes in land use and natural resource governance over the past century has resulted in rapid degradation of our native ecosystems, alienating changes in human relationships to the land and sea, and a common disassociation with our natural world. Management and research organizations need to better understand the context of this history in order to better measure, and share the value of ecosystem services and, in turn, build a broader base of support for and engagement in effective conservation and management. This Track will focus on sharing lessons and experiences (good and bad) from efforts to build bridges among the diverse communities by providing credible and robust information on the links between ecosystem management and the attainment of economic and social goals. Sessions will demonstrate that conservation and management efforts that take a laulima (cooperative) approach are more likely to succeed, and will provide detailed experiences on how the whole can indeed be greater than the sum of the parts.



#### 2. Safeguarding Sacred Places: Restoration and Protection of Managed Areas

Hawai'i is blessed with many special places set aside for their importance, bio-cultural resources, and unique characteristics. These protected areas are found on the highest

[Mānoa: Documentary film series reveals threats to sacred places](#) August 26, 2014

### Say What?

Kyra on [My Audition for Wheel of Fortune... And Now the Wait Begins](#)

Damon on [Hawaii Residents Have Opportunity to Spot the Space Station Tonight](#)

Justin on [Hawaii Residents Have Opportunity to Spot the Space Station Tonight](#)

Becky on [Commentary: Teen, Drug & Human Trafficking Concerns in Hilo](#)

VW on [My Audition for Wheel of Fortune... And Now the Wait Begins](#)

Damon on [My Audition for Wheel of Fortune... And Now the Wait Begins](#)

Wheel Contestant :- ) on [My Audition for Wheel of Fortune... And Now the Wait Begins](#)

Damon on [My Audition for Wheel of Fortune... And Now the Wait Begins](#)

Lester on [My Audition for Wheel of Fortune... And Now the Wait Begins](#)

Jessica on [My Audition for Wheel of Fortune... And Now the Wait Begins](#)







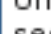





[Kinoshita Communications](#)

[Donate](#)



## Live Traffic Feed

[Watch Live](#) | [Get FEEDJIT](#)

-  Honolulu, Hawaii, United States arrived 0 secs ago.
-  Washington, United States arrived 1 secs ago.
-  Hilo, Hawaii, United States arrived 26 secs ago.
-  Brighton, Michigan, United States arrived 43 secs ago.
-  Texas, United States arrived 1 min ago.
-  United States arrived 1 min ago.
-  Hilo, Hawaii, United States arrived 1 min ago.
-  Hilo, Hawaii, United States arrived 1 min ago.
-  United Kingdom arrived 2 mins ago.
-  United Kingdom arrived 2 mins ago.

peaks, deep ocean, and everywhere in between. Protected areas are microcosms of larger ecosystems and landscapes. At the same time, Hawaii's extensive systems of protected federal, state and privately or community-owned and -managed lands and waters provide critical ecosystem system services that sustain us. They also serve as important sources of native species used in restoration elsewhere. To be effective and successful, their managers must deal with both the issues that pervade conservation issues in Hawai'i: invasive species, loss of ecosystem function, climatic change, population effects, and the socio-cultural needs of community. This track will focus on place-based conservation occurring in our protected areas. Sessions will demonstrate the importance of place-based conservation, the differences between place-based and issue-based conservation, ecosystem services provided by protected areas, the importance of refugia, and need for community stewardship.



## [World Wide Ed](#)

[Where In Hawaii is Edward Sugimoto? – August 27, 2014](#)

## [Pulpconnection](#)

[Halle Berry Is on Maui, and You're Not](#)

### 3. Invertebrates: Gems of Pacific Island Ecosystems

With their incredible abundance, diversity, and distribution, invertebrates – both on land and in the sea – are the ties that bind our island ecosystems together. Our amazing endemic species are not only vital food sources, pollinators, and decomposers, but serve as indicators of ecosystem health, harbingers of global climate change, and icons of cultural significance. The incredible physiological and behavioral adaptations that have made our native invertebrate species so unique also put them and the ecosystems that they support, at great risk. Track and sessions will focus on illustrating the role of invertebrates in sustaining our natural, agricultural, and urban ecosystems and their cultural importance into the future, and include demonstrations of achievements in research, conservation, and management.



#### **4. Oceans and Shorelines: Where Conservation Meets Everyday People**

Hawaii's human history is based on the ocean. From the earliest Native Hawaiians who settled here to people today, our shorelines and nearshore waters are the places where conservation most directly meets people – as the provider for food, transportation, recreation, livelihood, and settlement. Unfortunately, with declining fishery resources, rising sea levels, warming ocean temperatures, ocean acidification and pollution, the health of our oceans are changing rapidly, requiring us to focus more attention on how these changes will affect us and what we have to do to increase the resiliency of both ecosystems and human communities. Increased attention and focus on marine conservation will aid Hawaii's conservation community in increasing our relevance to people and communities. This track is aimed at: mainstreaming marine conservation issues and successes within the broader conservation community; highlighting successful mauka-makai conservation approaches; sharing new initiatives and innovations aimed at enhancing food security and restoring fisheries in Hawai'i and larger Pacific region; and focusing attention on the cultural importance of the ocean to Hawaii's people.



### 5. Connecting People to Place: Bio-Cultural Foundations and Innovations in Resource Management

In Hawaiian conservation, there are cultural connections to the places we work. As such there is also a wealth of cultural knowledge tied to the history and people of these places upon which to draw from in order to increase our conservation success. This track will focus on both the foundations of culturally integrated conservation, as well as examples of cultural innovations to conservation in Hawai'i. Sessions are aimed at bio-cultural innovations and approaches to conservation, including integration of biology, culture, land-use history, community-based stewardship, and all that is rooted in aloha 'āina.



### 6. Collaboration Across Sectors: Island Leadership in Defining the New “Green (and Blue) Economy”

What sectors need to be involved in green initiatives, and how can island communities encourage cross-sector dialogue to promote effective developments in clean energy, food security, and the environment?

This track will focus on islands as microcosms for the world's sustainability challenges. It will highlight how Hawai'i is defining green growth to include sound management of our natural resources from the mountains to the sea and advancing innovative green growth initiatives through multi-sector and international collaborations. Sessions will demonstrate unique partnerships, programs and projects that will lead to a greener

economy with more opportunities for green jobs.

## **WORKSHOPS/TRAININGS**

Organizations and practitioners are welcome to conduct trainings (see “Conservation Campus” below) and workshops before or following the conference. While Hawaii Conservation Alliance (HCA) can contribute minimal logistical support, the facilitating organization(s) is responsible for organizing and supporting most aspects of their training or workshop. Please contact us for details about this new capacity building opportunity.

## **SUBMISSION PROCESS**

**Session Proposal & Abstract Deadline:** January 21, 2013

**Revisions Due:** March 15, 2013

**SESSION PROPOSALS AND ABSTRACTS MUST BE SUBMITTED ONLINE. THE SUBMISSION FORM IS NOW AVAILABLE AT:**

<https://hawaii.conference-services.net/authorlogin.asp?conferenceID=3464&language=en-uk>

## **FORMAT DESCRIPTIONS**

**Symposium:** a formal moderated session with 4-5 presentations organized around a topic or theme; individual presentation time is limited to 20 minutes; moderator introduces presenters and conducts Q&A session at end of session. Time limit: 2 hours per session. Abstracts for each presenter are required and due Jan 21, 2013, along with a complete session agenda.

**Forum:** A less formal, interactive panel or roundtable session organized around a topic or theme; moderator guides presenters' discussion and conducts Q&A session with audience during or after presentations. Time limit: 2 hours per session, with a minimum of :30 for audience participation. Abstracts for each presenter are not required unless requested by the forum organizer/chair.

**Workshop:** An interactive, highly facilitated, “hands on” session that minimizes formal presentations and emphasizes the application of information and/or technology. Active audience participation is encouraged. Subject categories may include: Education & Outreach, Community Engagement, Career & Skills Development, Management Tool Applications, etc. To register, one cohesive workshop abstract is required that describes engagement technique used by the person(s) facilitating the workshop. Hawaii-based workshop facilitators must be registered participants.

**Conservation Campus:** This an opportunity for organizations to host capacity building trainings and activities that focus on a specific skills transfer to conservation practitioners, teachers, etc or a time to engage a specific audience in a particular topic related to our larger theme (i.e. GIS analysis, integration of conservation in the classroom for teachers). A description is required to explain the goals and target audience of the training. Hawaii-based training facilitators must be registered conference participants. Trainings may occur on the weekend before or after the conference.

## **Oral and Poster Presentation Abstracts**

Formal, individual presentations on various conservation topics will be scheduled in one of the following sessions depending on the abstract content. On the abstract submission form, you will be asked to choose a preferred presentation format (oral or poster) and identify the status of your project: information or news item; project/idea under development; completed project with data and results. In some cases, the review committee may suggest that you change your preferred format depending on the content of your abstract, available time in the program, and available space in the exhibit hall. All oral and poster presenters must be registered participants.

### **Oral presentations:**

a.) 20-minute individual presentations (16-minute talk, 3 minutes Q&A, 1 minute for transition time)

b.) 10-minute individual presentations (7-minute talk, 2 minutes Q&A, and 1 minute for

transition time).

Oral presentations will be scheduled into 2-hour sessions concluding with a 20-minute Q&A session. The 10-minute presentation format is appropriate for a topic of broad appeal, a new project or innovative idea, a recent success, a news story or update.

**Poster presentation:** This is a visual presentation to showcase your work to conference attendees throughout the entire conference. Posters are particularly useful as a way to present quantitative research. More than one participant may author a poster, but at least one of the primary authors must be in attendance to discuss the poster at the Opening Reception July 16th.

For more information Contact HCA Program Coordinator, Shelley Steele 808-687-6152 [coordinator@hawaiiconservation.org](mailto:coordinator@hawaiiconservation.org)

#### Related articles

- [Hawaii Film “Endangered Hawai’i” Awarded International Jury Prize in EkoFilm Festival](#) (damontucker.com)
- [Hikianalia Arrives Home in Hawaii – Welcoming in Hilo Bay Tomorrow](#) (damontucker.com)
- [Hawai’i Community Foundation Partnership Fuels Grassroots Restoration Efforts](#) (damontucker.com)

---

#### Like:



Filed under: [Agriculture](#), [aloha](#), [Announcements](#), [Education](#), [Environment](#), [Hawaii](#), [Hawaiian](#), [Oahu](#), [State Affairs](#), [Sustainable Living](#) | Tagged: [2013 Hawaii Conservation Conference](#), [Island ecology](#), [Native Hawaiians](#), [Pacific Islands](#) | [Leave a comment »](#)

## [Members Needed for the 2013 Hawaii Conservation Conference Abstract Committee](#)

Posted on **November 5, 2012** by Damon

The Hawaii Conservation Alliance is currently recruiting members for the 2013 Hawaii Conservation Conference Abstract Committee. This is your chance to contribute to the conference’s success by influencing the content of the sessions and presentations! Please volunteer and encourage your colleagues to also sign up to help review session proposals and abstracts for the 2013 Hawaii Conservation Conference “Living Today, Sustaining Tomorrow: Connecting People, Places and Planet.”



The 2013 Hawaii Conservation Conference will be happening at the Hawaii Convention Center

A description of the Abstract Committee and a timeline is included below. The Call for Proposals can be found at [http://hawaiiconservation.org/activities/hawaii\\_conservation\\_conference/conferences/2013/](http://hawaiiconservation.org/activities/hawaii_conservation_conference/conferences/2013/)

#### Abstract Committee Description

Help develop criteria and guidelines for session proposal and abstract submissions. Review proposals for symposia, forums, workshops, and trainings. Review and accept/reject abstract submissions. Assist in developing conference program and schedule. Help identify session moderators and update guidelines for moderators. Assist with final editing of abstract and program book.

#### Session Proposal & Abstract Review Timeline

- Abstract Committee email comments on Oxford Abstracts submission form and evaluation criteria: DUE November 19
- Abstract Committee email comments on moderator and presenter guidelines: DUE January 10
- All Abstract and Session proposals deadline: January 21
- Abstract and Session proposal REVIEW by committee (online thru Oxford Abstracts): January 25-February 8
- Abstract Review Committee MEETING in person or conference call (8hrs): March 1st
- All Revisions deadline: March 15
- Scheduling of session and oral presentation MEETING (2-3 volunteers in person only): March 29

Please sign up at <http://www.surveymonkey.com/s/RJYHR3F> or email [coordinator@hawaiiconservation.org](mailto:coordinator@hawaiiconservation.org)

Like:

f Facebook 1 1 1

Twitter 1 1 1

g+ Google

More

Filed under: [Agriculture](#), [aloha](#), [Announcements](#), [Education](#), [Environment](#), [Hawaii](#), [Hawaiian State Affairs](#), [Sustainable Living](#) | Tagged: [2013 Hawaii Conservation Conference](#) | [Leave a comment »](#)

## [2013 Hawai'i Conservation Conference – Call for Proposals and Abstracts](#)

Posted on **October 19, 2012** by Damon

2013 marks the 21st anniversary of the annual Hawai'i Conservation Conference (HCC) allowing us the opportunity to bolster island conservation in Hawai'i and wider Pacific Islands. Highlights include: thought provoking keynote speakers; innovative panels and forums; a community event, novel lunch & reception, training opportunities, and more.



Hawaii Conservation Alliance Executive Director Lihla Noori and Anuheia with the youngest attendee of the 2012 Hawaii Conservation Conference

### **CALL FOR PROPOSALS & ABSTRACTS**

Living Today, Sustaining Tomorrow: Connecting People, Places and Planet, July 16th – 18th, 2013    Hawai'i Convention Center, Honolulu, HI

**Session and Abstract Proposal Deadline:** January 21, 2013    **Revisions Deadline:** March 15, 2013



Join us in celebrating the 21st annual Hawai'i Conservation Conference! If you are interested in sustaining our natural resources for current and future generations and would like to share your topic of expertise with the conservation community in Hawai'i and the wider Pacific Region, the Hawai'i Conservation Alliance would like to request your proposals and abstracts for the 2013 Hawai'i Conservation Conference!

See the official call below, or download it from our website: [HERE](#).

If you have any questions, please contact 808-687-6152 or [coordinator@hawaiiconservation.org](mailto:coordinator@hawaiiconservation.org)

#### TRACKS & SESSION TOPICS

The HCC organizing committee is soliciting proposals for sessions, forums, workshops, trainings and individual oral or poster presentations in the following six tracks. Integrated approaches to research and management that involve community and cultural knowledge and approaches as a best practice will be given priority ranking.

##### 1. Practicing Lāulima (many hands): Building of Bridges between Ecosystems and Society

Human well-being is inextricably linked to the natural world through a myriad of exchanges – most of which go unnoticed or are under-appreciated in modern times.

Radical changes in land use and natural resource governance over the past century has resulted in rapid degradation of our native ecosystems, alienating changes in human relationships to the land and sea, and a common disassociation with our natural world. Management and research organizations need to better understand the context of this history in order to better measure, and share the value of ecosystem services and, in turn, build a broader base of support for and engagement in effective conservation and management. This Track will focus on sharing lessons and experiences (good and bad) from efforts to build bridges among the diverse communities by providing credible and robust information on the links between ecosystem management and the attainment of economic and social goals. Sessions will demonstrate that conservation and management efforts that take a lāulima (cooperative) approach are more likely to succeed, and will provide detailed experiences on how the whole can indeed be greater than the sum of the parts.

##### 2. Safeguarding Sacred Places: Restoration and Protection of Managed Areas

Hawai'i is blessed with many special places set aside for their importance, bio-cultural resources, and unique characteristics. These protected areas are found on the highest peaks, deep ocean, and everywhere in between. Protected areas are microcosms of larger ecosystems and landscapes. At the same time, Hawaii's extensive systems of protected federal, state and privately or community-owned and -managed lands and waters provide critical ecosystem system services that sustain us. They also serve as important sources of native species used in restoration elsewhere. To be effective and

successful, their managers must deal with both the issues that pervade conservation issues in Hawai'i: invasive species, loss of ecosystem function, climatic change, population effects, and the socio-cultural needs of community. This track will focus on place-based conservation occurring in our protected areas. Sessions will demonstrate the importance of place-based conservation, the differences between place-based and issue-based conservation, ecosystem services provided by protected areas, the importance of refugia, and need for community stewardship.

### 3. Invertebrates: Gems of Pacific Island Ecosystems

With their incredible abundance, diversity, and distribution, invertebrates – both on land and in the sea – are the ties that bind our island ecosystems together. Our amazing endemic species are not only vital food sources, pollinators, and decomposers, but serve as indicators of ecosystem health, harbingers of global climate change, and icons of cultural significance. The incredible physiological and behavioral adaptations that have made our native invertebrate species so unique also put them and the ecosystems that they support, at great risk. Track and sessions will focus on illustrating the role of invertebrates in sustaining our natural, agricultural, and urban ecosystems and their cultural importance into the future, and include demonstrations of achievements in research, conservation, and management.

### 4. Oceans and Shorelines: Where Conservation Meets Everyday People

Hawaii's human history is based on the ocean. From the earliest Native Hawaiians who settled here to people today, our shorelines and nearshore waters are the places where conservation most directly meets people – as the provider for food, transportation, recreation, livelihood, and settlement. Unfortunately, with declining fishery resources, rising sea levels, warming ocean temperatures, ocean acidification and pollution, the health of our oceans are changing rapidly, requiring us to focus more attention on how these changes will affect us and what we have to do to increase the resiliency of both ecosystems and human communities. Increased attention and focus on marine conservation will aid Hawaii's conservation community in increasing our relevance to people and communities. This track is aimed at: mainstreaming marine conservation issues and successes within the broader conservation community; highlighting successful mauka-makai conservation approaches; sharing new initiatives and innovations aimed at enhancing food security and restoring fisheries in Hawai'i and larger Pacific region; and focusing attention on the cultural importance of the ocean to Hawaii's people.

### 5. Connecting People to Place: Bio-Cultural Foundations and Innovations in Resource Management

In Hawaiian conservation, there are cultural connections to the places we work. As such there is also a wealth of cultural knowledge tied to the history and people of these places upon which to draw from in order to increase our conservation success. This track will focus on both the foundations of culturally integrated conservation, as well as examples of cultural innovations to conservation in Hawai'i. Sessions are aimed at bio-cultural innovations and approaches to conservation, including integration of biology, culture, land-use history, community-based stewardship, and all that is rooted in aloha 'āina.

### 6. Collaboration Across Sectors: Island Leadership in Defining the New "Green (and Blue) Economy"

What sectors need to be involved in green initiatives, and how can island communities encourage cross-sector dialogue to promote effective developments in clean energy, food security, and the environment?

This track will focus on islands as microcosms for the world's sustainability challenges. It will highlight how Hawai'i is defining green growth to include sound management of our natural resources from the mountains to the sea and advancing innovative green growth initiatives through multi-sector and international collaborations. Sessions will demonstrate unique partnerships, programs and projects that will lead to a greener economy with more opportunities for green jobs.



#### WORKSHOPS/TRAININGS

Organizations and practitioners are welcome to conduct trainings (see “Conservation Campus” below) and workshops before or following the conference. While Hawaii Conservation Alliance (HCA) can contribute minimal logistical support, the facilitating organization(s) is responsible for organizing and supporting most aspects of their training or workshop. Please contact us for details about this new capacity building opportunity.

#### SUBMISSION PROCESS

Session Proposal & Abstract Deadline: January 21, 2013

Session proposals and abstracts must be submitted online. The submission form will be available on the HCA website in early December, 2012: [www.hawaiiconservation.org](http://www.hawaiiconservation.org)



#### FORMAT DESCRIPTIONS

**Symposium:** a formal moderated session with 4-5 presentations organized around a topic or theme; individual presentation time is limited to 20 minutes; moderator introduces presenters and conducts Q&A session at end of session. Time limit: 2 hours per session. Abstracts for each presenter are required and due Jan 21, 2013, along with a complete session agenda.

**Forum:** A less formal, interactive panel or roundtable session organized around a topic or theme; moderator guides presenters' discussion and conducts Q&A session with audience during or after presentations. Time limit: 2 hours per session, with a minimum of :30 for audience participation. Abstracts for each presenter are not required unless requested by the forum organizer/chair.

**Workshop:** An interactive, highly facilitated, "hands on" session that minimizes formal presentations and emphasizes the application of information and/or technology. Active audience participation is encouraged. Subject categories may include: Education & Outreach, Community Engagement, Career & Skills Development, Management Tool Applications, etc. To register, one cohesive workshop abstract is required that describes engagement technique used by the person(s) facilitating the workshop. Hawaii-based workshop facilitators must be registered participants.

**Conservation Campus:** This an opportunity for organizations to host capacity building trainings and activities that focus on a specific skills transfer to conservation practitioners, teachers, etc or a time to engage a specific audience in a particular topic related to our larger theme (i.e. GIS analysis, integration of conservation in the classroom for teachers). A description is required to explain the goals and target audience of the training. Hawaii-based training facilitators must be registered conference participants. Trainings may occur on the weekend before or after the conference.

#### Oral and Poster Presentation Abstracts

Formal, individual presentations on various conservation topics will be scheduled in one of the following sessions depending on the abstract content. On the abstract submission form, you will be asked to choose a preferred presentation format (oral or poster) and identify the status of your project: information or news item; project/idea under development; completed project with data and results. In some cases, the review committee may suggest that you change your preferred format depending on the content of your abstract, available time in the program, and available space in the exhibit hall. All oral and poster presenters must be registered participants.

#### Oral presentations:

a.) 20-minute individual presentations (16-minute talk, 3 minutes Q&A, 1 minute for transition time)

b.) 10-minute individual presentations (7-minute talk, 2 minutes Q&A, and 1 minute for transition time).

Oral presentations will be scheduled into 2-hour sessions concluding with a 20-minute Q&A session. The 10-minute presentation format is appropriate for a topic of broad appeal, a new project or innovative idea, a recent success, a news story or update.

Poster presentation: This is a visual presentation to showcase your work to conference attendees throughout the entire conference. Posters are particularly useful as a way to present quantitative research. More than one participant may author a poster, but at least one of the primary authors must be in attendance to discuss the poster at the Opening Reception July 16th.

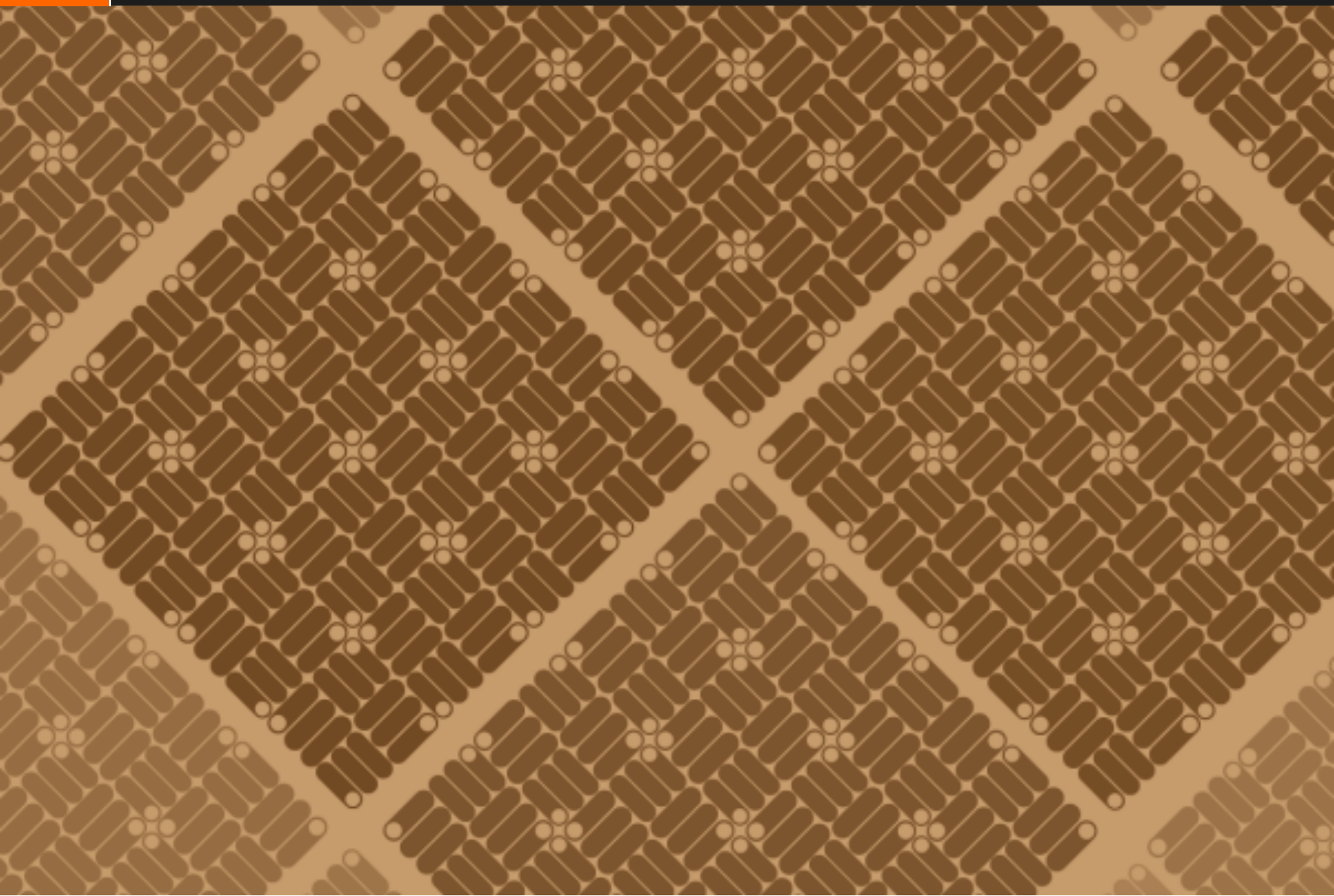
For more information Contact HCA Program Coordinator, Shelley Steele 808-687-6152 [coordinator@hawaiiconservation.org](mailto:coordinator@hawaiiconservation.org)

---

**Like:**



Filed under: [Agriculture](#), [aloha](#), [Announcements](#), [Education](#), [Environment](#), [Hawaii](#), [Opala in Paradise](#), [State Affairs](#), [Sustainable Living](#) | Tagged: [2013 Hawaii Conservation Conference](#), [Environment](#), [Hawai](#), [Hawaii Conservation Alliance](#), [Native Hawaiians](#), [Pacific Islands](#) | [Leave a comment »](#)



## **Come To Connect On Land, Food, Sustainability**

 **Hawaii Independent Staff**  July 03, 2013 07:59 PM

Honolulu, HI – The 21st Annual Hawaii Conservation Conference (HCC), 2013, organized by the Hawai'i Conservation Alliance (HCA), is scheduled for July 16-18, 2013 at the Hawaii Convention Center. The theme this year is Live Today, Sustain Tomorrow: Connecting People, Places, and Planet. As always, the HCC conference is designed to be an inspiring, action-oriented event that drives positive change within our islands. This year, the conference will feature a special Community Connections

Pau Hana to be held on Wednesday, July 17 from 1 to 7 p.m. This portion of the event will be free and open to the public, including private and public entities, non-profit organizations, businesses, community groups and anyone interested in connecting with like-minded people.

Community Connections will be divided into two sections and the public is invited to attend both at no cost. From 1-5:30 p.m., the Hawai'i Green Growth Initiative will host "Building Partnerships for a Sustainable Future". This afternoon session will feature interactive revolving round table discussions sharing "Bright Spots," examples of cross-sector collaboration. Visitors may also attend forums showcasing sustainability issues such as seafood security, water and climate change, tourism and environment, and more.

The evening session, "Kupa 'Ai Kakou," taking place from 5:30-8:30 pm, will feature a variety of activities highlighting multisensory Hawaiian art, culture and cuisine. One of the most anticipated events of the day is the Pau Hana tastings featuring locally sourced food and drink by Oahu's favorite chefs such as Mark Noguchi of Pili Hawaii and Taste, Ed Kenney of TOWN, and Daniel Anthony of Mana Ai. Attendees will also have the opportunity to talk story with 40+ green market vendors and green organizations, view a pop-up art exhibition by Maoli Real Time Arts Gallery, listen to live Hawaiian music and view the film screening of Seeds of Hope. No registration for the free event is necessary.

#### Event Details:

Who: Hawai'i Conservation Alliance

What: Community Connections Pau Hana

When: Wednesday July 17, 2013 1:00pm-5:30pm, 5:30pm-8:30pm

Where: Hawai'i Convention Center 1801 Kalakaua Ave, Honolulu, HI 96815

## DISCUSSION




Be the first of your friends to recommend this.



Add a comment...

Comment using... ▼

 Facebook social plugin

**0 Comments**

The Hawaii Independent

 Login ▼

Sort by Best ▼

Share 



Start the discussion...

Be the first to comment.

 Subscribe

 Add Disqus to your site

**DISQUS**

## Read Next

Welcome to Tradewinds

# About

[Masthead Blog](#)

[Contact](#)

[Advertising and Sponsorship](#)

[Awards](#)

---



## The Hawaii Independent

Thoughtful civic journalism that moves Hawaii forward.

© 2014 The Hawaii Independent Corporation

All Rights Reserved

# Contribute

[Support Independent Journalism](#)

[Suggest a Story](#)

[Add a Collection](#)

[Write a Forum Post](#)

[Create an Account](#)

[Login](#)

# Read

[hawaiiindependent.net](#)

Beat blogs, multimedia, and web features

## Collections

Posts, background information, and associated media for a topic. [+](#) Add a collection

## Twitter

Live-tweeting, links, and crowd-sourced journalism

## Facebook

Links and discussion

## RSS Feeds

Welcome to *Kahe Wale Online*, HVCB Membership News & Updates

**21st Annual Hawaii Conservation Conference, July 16-18, 2013**

Posted on June 22, 2013



**21st Annual Hawaii Conservation Conference, July 16-18, 2013**  
Hawaii Convention Center

“Tourism and the Environment” will be the topic of a panel discussion at the upcoming Hawaii Conservation Conference. This forum will focus on the efforts currently taking place by the tourism sector to protect Hawaii’s natural resources as well as a discussion on what more can be done to foster partnerships between the visitor industry and the state’s environmental organizations. Representing the visitor industry on this panel will be Noelani Schilling Wheeler, senior director of marketing, Oahu Visitors Bureau; Kelly Hoen, general manager, The Royal Hawaiian; Dr. Andrew Rossiter, director, Waikiki Aquarium; and Neil Hannahs, director of strategic integration, land assets division, Kamehameha Schools.

Beyond this session, the Hawaii Conservation Conference will feature a three-day schedule of presentations and discussions that will highlight various aspects related to the sustainability of Hawaii’s ocean, land and culture.

We hope that many members of Hawaii’s visitors industry will register for this conference dedicated to our industry’s most important and fragile assets. More information about the speakers and session and online registration are available at <http://hawaiiconservation.org>, or click [here](#) for a printable version.

Sponsorship opportunities are also available. Visit the Hawaii Conservation Alliance [website](#) for more information.



**News by Island**

All Islands (172)

Hawaii Island (38)

Kauai (24)

Lanai (28)

Maui (33)

Molokai (27)

Oahu (30)

**Member2Member Coupons**

Special offers and discounts, submitted by members, for members. Browse the new [Member2Member Coupon](#) page to see what has been posted so far, and then [submit your own](#).

**Popular Topics**

added value service apec **Asia** avs award  
benefit big island **bivb** blitz calendar  
**cmi** did-you-know discount **event**  
events extranet how to **hta** htj  
invitation japan kamaaina kauai **kvb**  
marketing maui meeting meetings  
**Member-to-Member**  
membership **mvb** new  
**newsletter** oahu  
opportunity **ovb** release  
**research** seminar training travel  
trade trends tutorial update **video**

**Video Library**

We’ve launched a series of instructional videos and handouts to help members learn more

about the benefits and services available to them, and how to keep their membership information up to date.

[Opportunities \(2\)](#)

[Tutorials \(7\)](#)

### HVCB Membership Directory

Interested in networking or collaborative opportunities? View the new [HVCB Membership Directory](#) to find potential partners.

### Member Articles

Visit the [Member to Member](#) section to browse special offers, events, or other information submitted by members, for members.

### Market Insights Online

Your one-stop source for the latest in HVCB market research and analysis.

### Not yet a member?

Contact us at (808) 923-1811 or [membership@hvcb.net](mailto:membership@hvcb.net) and we'll be happy to learn more about your business and goals so that we can best explain what HVCB Membership has to offer you.

**30**  
JUL  
2013

## Hawaii Conservation Conference



Exciting things are happening for conservation throughout the year here in Hawaii, yet it is rare to connect with the many people, places, and planet all in one place. A rare opportunity to connect is the 2013 Hawaii [Conservation Conference](#) that took place at the Honolulu Convention Center. With so many inspiring and informative talks going on at the same time it is difficult for an attendee to choose which talks to attend!

Many local businesses and organizations are also tabling at the event and are happy to talk to you about what they're doing and give you more information on how to get involved. Of the many attending some included: [KUPU](#), [Kealopiko](#), [Hawaii Department of Land and Natural History](#) and [Hui Ku Maoli Ola Native Plant Nursery](#).



A talk by Chad Wiggins discussed the decline in fish numbers on Puakō reefs over the past forty years. Even within the marine life conservation district, where only pole fishing is permitted, fish numbers have declined. One reason for this decline is a constant sediment plume originating from Puakō bay. This study began monitoring fish numbers in 2009 and combined that data with a meta analysis of all previous studies of the bay. Other signs of declining health are apparent, for instance, coral cover have declined from 80% in 1973 to 30% today. Community education efforts have focused on educating fishermen about the size of prime spawners for specific fish species and the seasons in which each species spawns. However, the trend on Puakō's reef is declining fish numbers and coral health.



*(Image of Puako Bay, retrieved from puakobay.com)*

### Blog Entry Categories

- [All Kupu News & Coverage](#)
- [Press Releases](#)
- [Media Coverage](#)
- [General Kupu News](#)
- [Intern Stories](#)
- [Kupu Program News](#)
  - [CommunityU Program](#)
  - [RISE Program](#)
  - [Gateway Program](#)
  - [Frontiers Program](#)
  - [Extended Internship Program](#)
  - [E2U Program](#)
- [RISE Intern Blog](#)

### Quick links

- [Apply to a Kupu Program Online](#)
  - [CommunityU](#)
  - [RISE](#)
- [Subscribe to our E-Newsletter](#)
- [Donate Now](#)
- [Events Calendar](#)

Many other exciting talks are taking place throughout the conference. Talks from the world of marine resource management, coral reef management and science, climate change, sustainability, and many more provide insight into the many opportunities to work in the field of conservation here in Hawaii. Some highlights include monitoring of native bee species, and diversified agriculture on the Hamakua coast.

-Veronica Gibson

## Our Mission

To empower youth to serve their communities through character-building, service-learning, and environmental stewardship opportunities that encourage integrity (pono) with God (Ke Akua), self and others.

## Latest Tweets



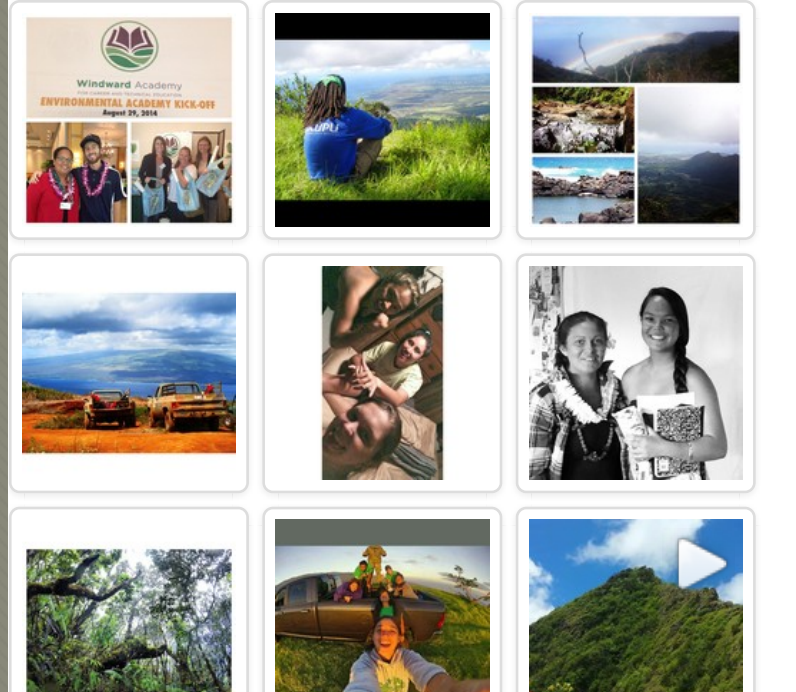
Kupu Hawaii

@kupuhawaii

28 Aug

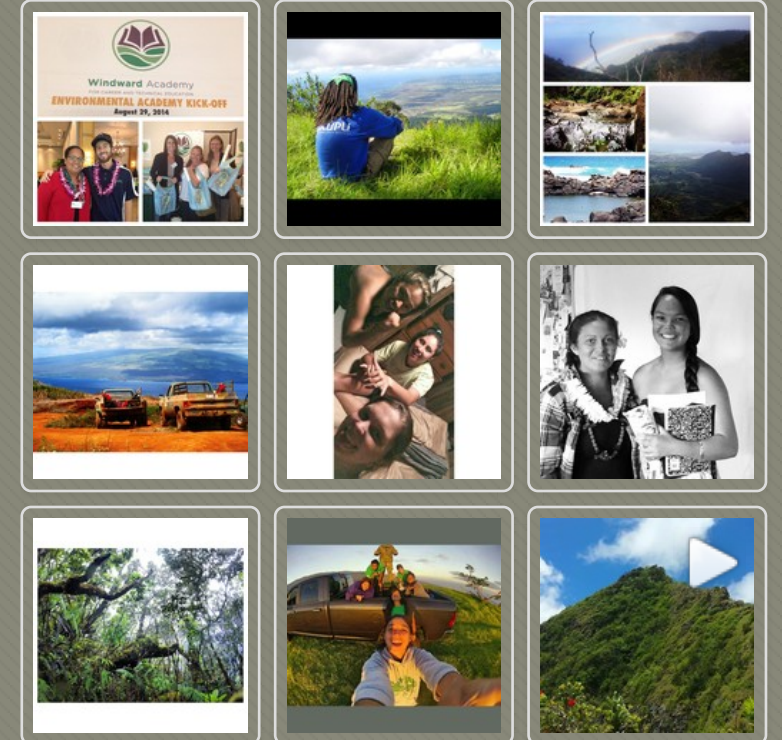
I posted 22 photos on Facebook in the album "August 2014 Lau Kupu - Loko Ea Fishpond"  
[fb.me/3xHA3mnxx](https://fb.me/3xHA3mnxx)

## Kupu on Facebook



## #kupuhawaii on Instagram

Follow us at @kupuhawaii !!



# TOP STORIES

## PAN FUND attended 21<sup>st</sup> Annual Conservation Conference

While this year's conference theme "Live Today, Sustain Tomorrow: Connecting People, Places and Planet" has a rudimentary ring to it, it was truly all but that... And much more! The intensive 3 day conservation conference (July 16-18) hosted by Hawaii Conservation Alliance (HCA), at the Hawaii Convention Center, featured some of the most dynamic conservation

leaders from all over the region. HCA is a cooperative collaboration of conservation leaders representing nineteen government, education and nonprofit organizations. The purpose of the conference is to facilitate information transfer and interaction between natural resource managers and the scientific community.

During the Micronesia Challenge Forum, held on the last day of the conference, remarkable information presented included the following:

1) *Micronesia Challenge: Overview and Progress-* Wayne Andrews, PIMPAC & MCT

2) *Micronesia Challenge Measures: Measuring for Effectiveness* - Wayne Andrews, PIMPAC & MCT



ward - Wayne Andrews, PIMPAC & MCT

PANF wishes to thank all the panellists: Wayne Andrews, Peter Houk, Matthew Lutkenhouse for the excellent collaboration, along with special thanks to Michael Lamier, of NOAA-Fisheries, for his wonderful support in facilitating the panel. In addition, PANF extends a warm "Alii and Kom Kmal Mesulang" to Lihla Moor

(HCA), all the generous event sponsors, and the HCA team for coordinating a successful event with over 400 participants.

"The conference all together was very impressive, replete with cross-sharing of lessons learned, challenges, and opportunities in conservation and biological economics. This in turn, advanced the regional awareness for the Micronesia Challenge, the Palau Protected Areas Network, as well as the PAN Fund. Moreover, the opportunity to promulgate Palau's story with



Palau Pacific Resort

## ANNOUNCEMENT

highly motivated, qualified, skilled and join our award winning team.

charge, co-pay medical & dental coverage, duty meals, company transport and more.

an individual for the following positions:

- Plumber
- Public area cleaner
- Recreation attendant
- Refrigerator technician
- Reservation agent
- Reservation manager
- Retail agent
- Room attendant
- Sales & marketing agent
- Seamstress/tailor
- Secretary
- Security officer
- Steward
- Storekeeper
- Upholsterer
- Valet runner
- Waiter/Waitress
- Weaver

form from Palau Pacific Resort in person and submit achievement, certificate of employment and attached department by Friday 16th August 2013 Monday to 10am to 4.30pm.

be contacted and those who have applied within the need not reapply.

do not call.

Palau Pacific Resort

1) *Micronesia Challenge: Overview and Progress*- Wayne Andrews, PIMPAC & MCT

2) *Micronesia Challenge Measures: Measuring for Effectiveness through both Biophysical and Socio-Economic Monitoring*- Peter Houk, Ph.D.

3) *Micronesia Challenge So-*



*cial Marketing Campaigns: -The MCT-RARE Pride Campaigns -Matt Lutkenhouse, Rare Conservation*

4) *Micronesia Challenge Case Study: The Palau Protected Areas Network and PAN Fund Sustainable Financing Model*-Clarinda Ziegler, PAN FUND

5) *Micronesia Challenge: Lessons Learned and a Way For-*

ness for the Micronesia Challenge, the Palau Protected Areas Network, as well as the PAN Fund. Moreover, the opportunity to promulgate Palau's story with PAN and PAN Fund, as always, is humbling and deeply rewarding", mentions PAN Fund's General Manager, Clarinda Ziegler, who was also one of the presenters. In conjunction with the networking and support efforts were PAN Fund Board of Directors Tutii Chilton and Kevin Chin and the students and faculty participants from Palau Community College.

PANF is grateful for the opportunity not only to part-take in the conference but also to be able meet and foster lasting friendships with those who possess similar sentiments, goals, and determination in environmental and conservation efforts.

To find out more information regarding the conference and topics covered, please visit the Hawaii Conservation Alliance website at [www.hawaii-conservation.org](http://www.hawaii-conservation.org).

## CAT 84-01 to hold farewell concert

BY PETER ERICK L. MAGBANUA  
*Reporter*

As their tribute to the warm hospitality given to them during their tour here for the last six months, the Civic Action Team (CAT) 84-01 will holding a farewell concert on August 3 at the Riptide Bar and Grill.

The event will be from 9 p.m.

to 1 p.m. and tickets are sold at \$5 for early buyers while tickets at the gate will be sold at \$7.

CAT 84-01 led officer in charge 1Lt. Danielle Monroe will be performing on stage together with the Simple Lang band.

For more information call Camp Katuu at 587-1311 or Ben at 775-2723 or Diony at 775-1200.

# JUST SAY NO TO



The public is hereby informed of a sealed proposal from **Truck for ROP**. Specific companies/businesses may bid for Property and Supply Division by **Local Fund**.

Proposals or offers may be dropped off at Director's Office. Number must be clearly marked.

Procurement Officer reserves the right to cancel or modify this notice.

## PAN FUND to attend 21<sup>st</sup> Annual Conservation Conference

The Protected Areas Network Fund (PANF) will be attending the 21<sup>st</sup> Conservation Conference in Honolulu, Hawaii on July 16-18 2013. This conference is organized by the Hawaii Conservation Alliance (HCA). HCA is a cooperative collaboration of conservation leaders representing nineteen government, education and non-profit organizations. This year's conference theme is *Live Today, Sustain Tomorrow: Connecting People, Places and Planet*. The purpose of the conference is to facilitate information transfer and interaction between natural resource managers and the scientific community.

PANF is the financial trustee corporation for the Palau Protected Areas Network (PAN). The purpose of the PANF is to provide funds for the conserving Palau's biodiversity and ensure the sustainable use of its natural resources through strategic actions and medium



CHILTON

CHIN

ZIEGLER

to long term financial support of the PAN.

Kevin Chin, PANF Vice Chairman, and Clarinda Ziegler, PANF General Manager, Tutii Chilton PANF Chairman will be travelling to Hawaii to attend the conference. This will be an ideal networking opportunity with numerous conservation leaders from all over the region and not to mention, the wealth of information, resources, and discussions on diverse topics including biosecurity, climate change, and watershed protection.

Please visit Hawaii Conservation Alliance website at [www.hawaiiconservation.org](http://www.hawaiiconservation.org) for more information about the conference.

*Philippines Honorary*

Call today

**nd bp** NATI  
DEVE  
BANK  
Financing